

2011-08-16



## IN THIS ISSUE

- [Thüringer Behälterglas GmbH Schleusingen successfully upgrades their production facilities](#)
- [Innovative IT processes mean happy customers](#)

## MESSAGE IN A BOTTLE



Repair or replace? It is only natural to try and get the most out of your investments, especially when the investment is a very expensive piece of machinery that is still in great condition...except for one tiny broken part that it just won't work without!

We often get requests for very old spare parts although, mechanically, the machines are still completely sound. The problem is that development in electronic technology is so rapid these days that the components needed are simply no longer available.

So, what can you do? The best approach is to be proactive. Don't wait until something actually breaks down but communicate regularly with your suppliers who will be able to advise you on the availability of essential parts and any developments in the technology you use.

## THE FUTURE OF GLASS

As we find ourselves in the middle of 2011 – neither too close to the memories of 2010 or the expectations of 2012 – it seems only right to concentrate on our current position. While some of the world's major economies are merely plodding along, Heye International is enjoying a period of impressive growth. As you might already have read, we are expanding our research and production facilities but, more importantly, we are also increasing our most important resource and inviting more expert professionals to join the Heye family.



However, we are, of course, still looking forward. In particular, we are devoting considerable energy to planning our Glass Symposium 2011, to take place in early September, at which we shall be taking a close look at "The Future of Glass" and also the past and present of the industry.

Yours,  
Dirk Pörtner

[Back to top](#)

## THÜRINGER BEHÄLTERGLAS GMBH SCHLEUSINGEN SUCCESSFULLY UPGRADES THEIR PRODUCTION FACILITIES



investment in its manufacturing operation, together with a new administrative building.

Heye International was delighted to assist both in the overhaul of the existing production facilities and in supplying a new IS-

Thüringer Behälterglas GmbH Schleusingen recently decided to lay the foundations for extending over 150 years of success by making a significant

## IMPRINT

---

Heye International GmbH  
Lohplatz 1  
31683 Obernkirchen  
Germany  
T: +49 5724 26-452  
F: +49 5724 12 88

[management@heye-international.com](mailto:management@heye-international.com)  
[www.heye-international.com](http://www.heye-international.com)

Ust-Ident-NR DE 220504231

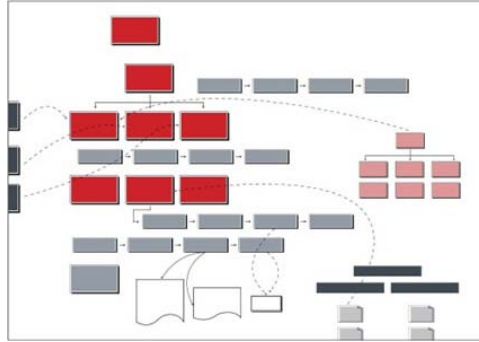
Machine for the project, incorporating innovations such as a state-of-the-art operating system, the Automatic Press Duration Control technology and the Intelligent Central Lubrication system, all developed by Heye.

As a result of our outstanding cooperation together, the project was completed in record time and, shortly after production began at the end of April, incredibly high efficiency rates were already being achieved.

[Back to top](#)

## INNOVATIVE IT PROCESSES MEAN HAPPY CUSTOMERS

---



Here at Heye International, we know only too well that planning processes are not linear. They have to be flexible and adaptable in order to cope with the imprecise reality of transferring a project from paper to real life. We have accepted the challenge of easing this transition with enthusiasm by analysing and optimising the internal processes involved.

The key, we believe, rests in creating a dynamic ordering network able to effectively unite generic made-to-stock items with customer-specific, time-sensitive made-to-order components and which can also track and prioritise other concurrent projects.

The solution is a system that displays every stage of these large projects on the SAP PS (Project System). Tasks and objects are shown on a user interface in the form of network plans from the PP (Production Planning) module. This so-called Manufacturing Workbench allows our production planners to coordinate and optimise all manufacturing orders to ensure that we never miss our partners' deadlines and are always mindful of the big picture.

[Back to top](#)