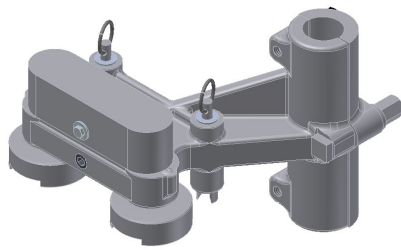


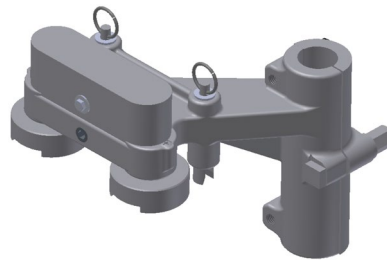
SECTION 8.

# BAFFLE HOLDER

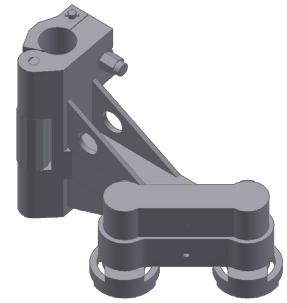
## BAFFLE HOLDER – PISTON ROD



215F090100



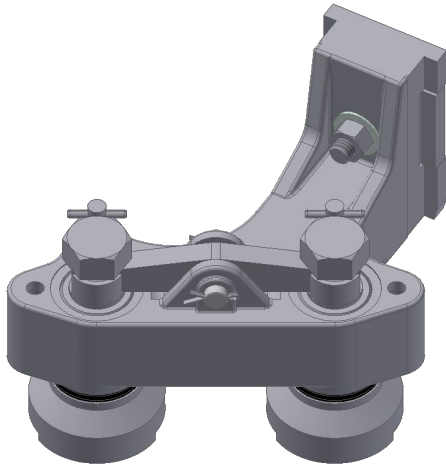
215F091100



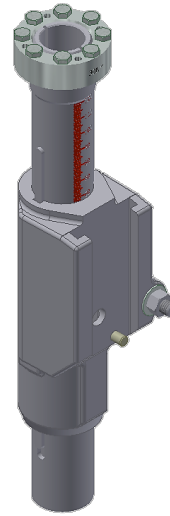
Hinge Type

| Machine type | Limits ( $\theta$ mould – upperside baffle) | Piston Rod- $\emptyset$ | Part No.   |
|--------------|---|-------------------------|------------|
| 4 ¼" SG      |   | 1 ½" - 38,1mm           | -          |
| 4 ¼" DG      |   | 1 ½" - 38,1mm           | 2209143100 |
| 5" DG        | min. 136,5mm (5,375") – max. 254mm (10")    | 1 ½" - 38,1mm           | 215F091100 |
|              | min. 76,9mm (3") – max. 204,5mm (8")        |                         | 215F090100 |
| 4 ¼" DG      | Hinge Type - 235mm                          | 1 ½" - 38,1mm           | 212F091000 |
| 5" DG        | Hinge Type - 235mm                          | 1 ½" - 38,1mm           | 215F090800 |
| 5 ½" DG      | Hinge Type - 235mm                          | 1 ¾" - 44,45mm          | 214F091200 |
| 6 ¼" DG      | Hinge Type - 235mm                          | 1 ¾" - 44,45mm          | 213F090800 |

## BAFFLE HOLDER – QUICK CHANGE



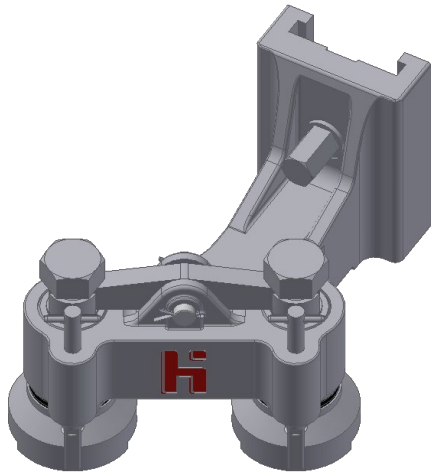
Baffle Holder QC



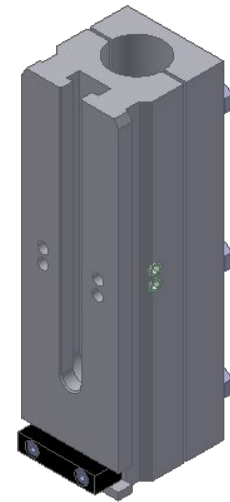
Mounting Kit

| Machine type | Part No.   | Mounting Kit           |
|--------------|------------|------------------------|
| 5" DG        | 215F095000 | 215F095100 for Ø 38,1  |
| 5 ½" DG      | 214F09*    | 213F094100 for Ø 44,45 |
| 6 ¼" DG      | 213F090400 | 213F094100 for Ø 44,45 |

## BAFFLE HOLDER – QUICK CHANGE WITH GROOVE STONE



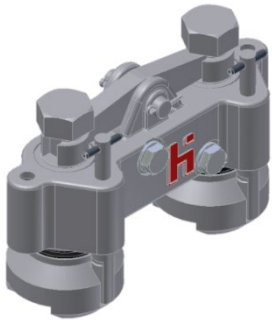
Baffle Holder QC



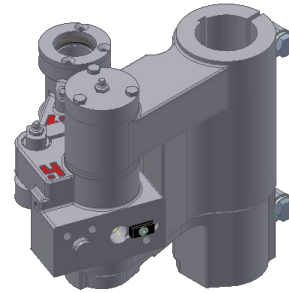
Mounting Kit

| Machine type | Part No.                   | Mounting Kit           |
|--------------|----------------------------|------------------------|
| 4 1/4" SG    | 2209551000 – Cast Type     | 2209559000 for Ø 38,1  |
|              | 2209551400 – welded Type   | 2209559000 for Ø 38,1  |
| 4 1/4" DG    | 2209552000 – Cast Type     | 2209559000 for Ø 38,1  |
| 5" DG        | 2209553000 – Cast Type     | 2209559000 for Ø 38,1  |
|              | 2209553100 – Aluminum Type |                        |
| 5 1/2" SG    | 2209551200 – Cast Type     | 2209559100 for Ø 44,45 |
| 5 1/2" DG    | 2209554000 – Cast Type     | 2209559100 for Ø 44,45 |
| 6 1/4" SG    | 2209551100 – Cast Type     | 2209559100 for Ø 44,45 |
| 6 1/4" DG    | 2209555000 – Cast Type     | 2209559100 for Ø 44,45 |

## BAFFLE HOLDER FOR PANTOGRAPH ON 5"-MACHINE



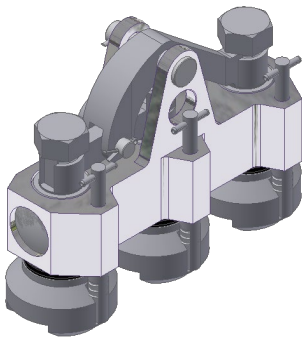
DG



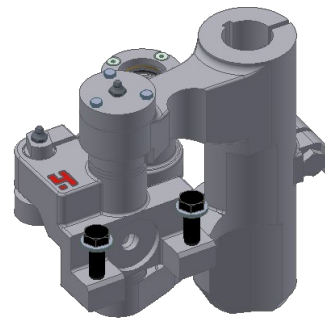
Pantograph Arm Assembly

| Machine type            | Part No.   |
|-------------------------|------------|
| 5" DG                   | 215F092200 |
| Pantograph Arm Assembly | 215F092300 |
| Mounting Parts          | 215F092700 |
| Guide Rod               | 215F092702 |

## BAFFLE HOLDER FOR PANTOGRAPH ON 5"-MACHINE X-Y ADJUSTABLE



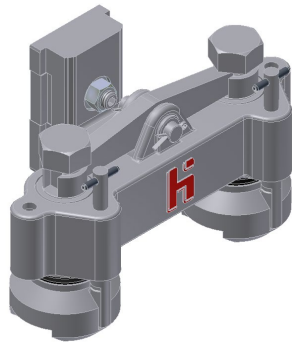
TG



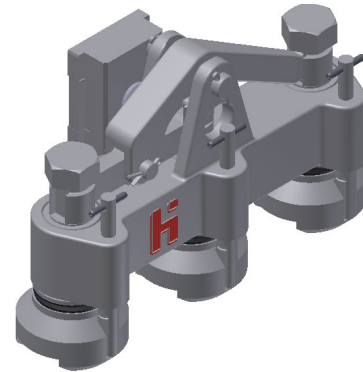
Pantograph Arm Assembly

| Machine type            | Part No.   |
|-------------------------|------------|
| 4 1/4" DG               | 215F093*** |
| 5" DG                   | 215F093400 |
| 85mm TG                 | 215F093300 |
| Pantograph Arm Assembly | 215F093200 |
| Guide Rod               | 2209141910 |

## BAFFLE HOLDER FOR PANTOGRAPH ON 6 1/4"-MACHINE

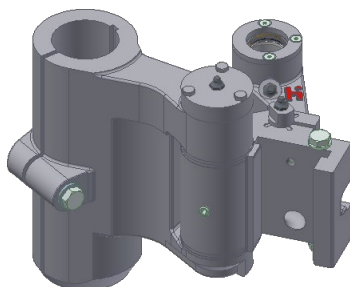


DG

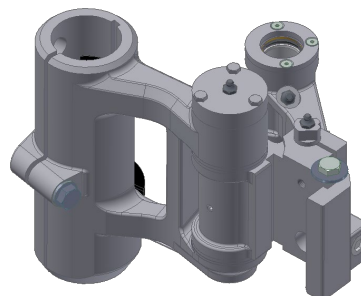


TG

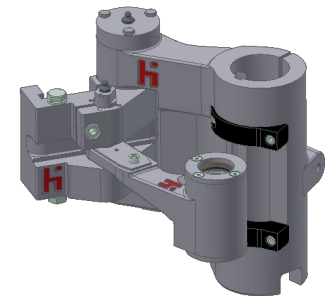
| Machine type                    | Part No.   |
|---------------------------------|------------|
| 5 1/2" SG                       | 211F090300 |
| 6 1/4" SG                       | 211F090200 |
| 5 1/2" DG                       | 214F091800 |
| 6 1/4" DG                       | 213F093700 |
| 4 1/4" TG                       | 213F093800 |
| for small Moulds (lower Limits) | 213F094300 |



Pantograph Arm Assembly  
Standard



Pantograph Arm Assembly  
Weight reduced



Pantograph Arm Assembly  
for lower limits

| Type             | Part No.   |
|------------------|------------|
| Standard         | 213F093400 |
| Weight reduced   | 213F094800 |
| For lower Limits | 21VN093400 |
| Mounting Parts   | 2209141500 |
| Guide Rod        | 2209141900 |