

SECTION 7.

FUNNEL HOLDER

FUNNEL HOLDER – PISTON ROD Ø 38.1 MM



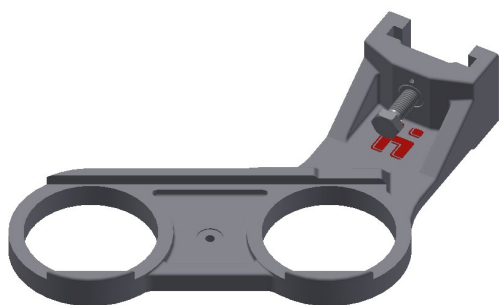
Piston Rod



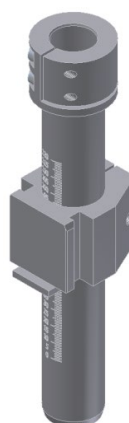
Hinge Type

Machine type	Type	Size	Description	Part No.
4 ¼" SG	Piston Rod	No. 2	3 ½" (88.9 mm)	211F080100
		No. 3	4 7/16" (112,7mm)	211F080200
4 ¼" DG	Hinge Type		2 ⅞" (73mm)	212F081000
5" DG	Piston Rod	1 (No. 54)	3 ¼" (82.5 mm)	215F080500
		2A (No. 52)	3 13/16" (96.8 mm)	215F080600
	Hinge Type	2 (No. 53)	3 ½" (88.9 mm)	215F080700
		2 (No. 53)	3 ½" (88.9mm)	215F086000
85mm TG				
5 ½" SG				
5 ½" DG	Piston Rod		3 ½" (88.9 mm)	214F081200
			3 ½" (88,9 mm)	214F085200
			4 7/16" (112,7 mm)	214F085300
	Hinge Type		3 ½" (88.9mm)	214F080800
			3 13/16" (96,8mm)	214F080600
			4 7/16" (112.7mm)	214F080900
6 ¼" SG				
6 ¼" DG	Hinge Type		3 ½" (88.9mm)	213F080800
			4 7/16" (112.7mm)	213F080700
4 ¼" TG	Hinge Type		3 ½" (88.9mm)	213F080900

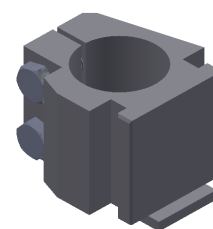
FUNNEL HOLDER – QUICK CHANGE



Funnel Holder QC



Mounting Kit with scale



Mounting Kit

Machine type	Size	Description	Part No.	Mounting Kit
4 ¼" SG	No. 0, 1, 2	3 ½" (88.9 mm)	2208551000 cast type	2208559000 (Ø 38.1) with scale 2208101300 (Ø 38.1) 2208140100 (Ø 50)
	No. 2A, 3	4 7/16" (112.7 mm)	2208551100 cast type	
	No. 4	5 3/16" (131.7mm)	2208551200 cast type	
	No. 0, 1, 2	3 ½" (88.9 mm)	2208551300 welded	
	No. 2A, 3	4 7/16" (112.7 mm)	2208551400 welded	
	No. 4	5 3/16" (131.7mm)	2208551500 welded	
4 ¼" DG	No. 00	2 7/8" (73mm)	2208552000	
	No. 0, 1	3 ¼" (82.5mm)	2208552100	
	No. 2	3 ½" (88.9mm)	2208552200	
5" DG	No. 0, 1	3 ¼" (82.5mm)	2208553000	
	No. 2	3 ½" (88.9 mm)	2208553100	
	No. 2A	3 13/16" (96.8mm)	2208553200	
	No. 3	4 7/16" (112.7 mm)	2208553300	
85mm TG	Size 00	57mm	2208557000	
	Size 0	71mm	2208557100	
5 ½" SG	No. 0, 1, 2	3 ½" (88.9 mm)	2208558000	
	No. 2A, 3	4 7/16" (112.7 mm)	2208558100	
	No. 4	5 3/16" (131.7mm)	2208558200	
5 ½" DG	No. 0, 1, 2	3 ½" (88.9 mm)	2208554000	
	No. 2A, 3	4 7/16" (112.7 mm)	2208554100	
6 ¼" SG	No. 0, 1, 2	3 ½" (88.9 mm)	2208558300	
	No. 2A, 3	4 7/16" (112.7 mm)	2208558400	
	No. 4	5 3/16" (131.7mm)	2208558500	
6 ¼" DG	No. 0, 1, 2	3 ½" (88.9 mm)	2208555000	
	No. 2A, 3	4 7/16" (112.7 mm)	2208555100	
4 ¼" TG	No. 0, 1	3 ¼" (82.5 mm)	2208556000	
	No. 2	3 ½" (88.9 mm)	2208556100	
	No. 00	2 7/8" (73 mm)	2208556200	