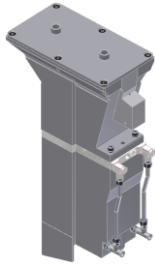


SECTION 3.

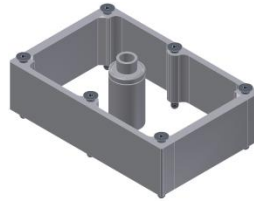
BLOW MOULD COOLING

BLOW MOULD COOLING – 4 1/4” CD DG

VERTICAL AIR STREAM (VAS) WITH V-INSERT DG CPL. WITH BOTTOM PLATE



Vertical Air Stream



Installation kit



Conversion kit

Description	Part No.
VAS 4 1/4” DG - V-insert (incl. Butterfly valve)	2214110040
VAS 4 1/4” DG - V-insert – direct flow (incl. Butterfly valve)	2214110046
VAS 4 1/4” DG - V-insert – direct flow (without Butterfly valve)	2214110052
Installation kit SG 70 mm	2214122800
Conversion kit 4 1/4” SG	2214110015

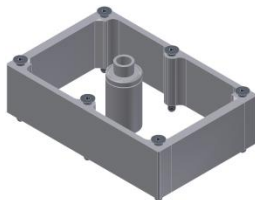
Height Adjustment and Spacer on request

BLOW MOULD COOLING – 5” SG

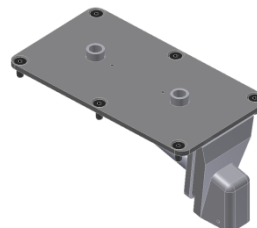
VERTICAL AIR STREAM (VAS) WITH V-INSERT SG CPL. WITH BOTTOM PLATE



Vertical Air Stream



Installation kit



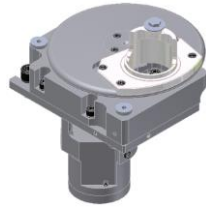
Conversion kit

Description	Part No.
VAS 5” SG - V-insert (incl. Butterfly valve)	2214110013
Installation kit SG 70 mm	2214122800
Conversion kit 5” SG to 5” DG	2214110014

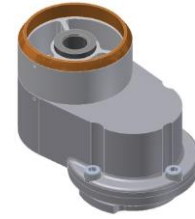
Height Adjustment and Spacer on request

BLOW MOULD COOLING – 5” CD DG

AXIAL MOULD COOLING (AC) EQUIPPED WITH BALL BEARINGS



Air supply
(ball bearing)

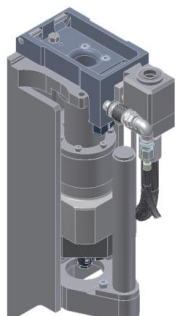


Air supply channel

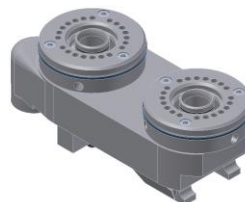
Description	Part No.
Air supply RH (cpl. with intermit. Valve)	2101418700
Air supply LH (cpl. with intermit. Valve)	2101418800
Air supply channel	2101416600
Air supply channel 1”	2101416900
Air supply channel 1 ¼”	2101416700

BLOW MOULD COOLING – 5” CD DG

AXIAL MOULD COOLING (AC) BLOW MOULD BOTTOM MECHANISM WITH BOTTOM ADAPTER



Blow mould bottom mechanism



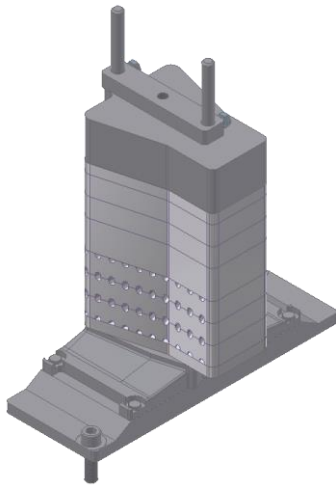
Blow mould bottom adapter

Description	Part No.
AC blow mould bottom mechanism*	2101400800
Blow mould bottom adapter axial	2101400600

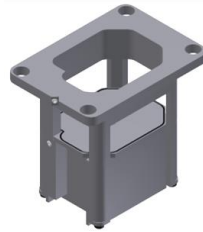
*2101400200 for non-Speedline IS-Machine

BLOW MOULD COOLING – 5” CD DG

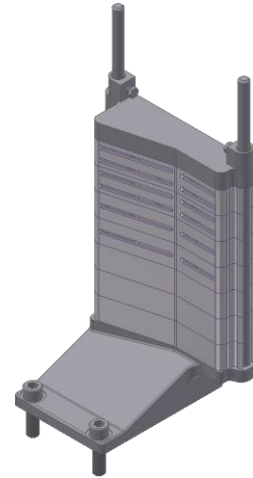
STACK COOLING RADIAL WITH SEPARATE INTERMITTENT VALVE



Stack Cooling
blank & blow-side stack pcs



Intermit. Valve

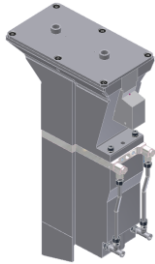


Stack Cooling
for assortment

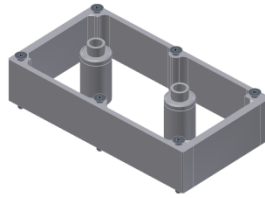
Description	Part No. w/o valve	Part No. with valve
Stack Cooling unit Middle	2221030100	2221030400
Stack Cooling unit RH	2221030200	2221030500
Stack Cooling unit LH	2221030300	2221030600
Intermit. Valve RH	2101216100	
Intermit. Valve LH	2101216000	
Stack cooling for 1 section (LH & RH) for assortment production	215F214200	

BLOW MOULD COOLING – 5” CD DG

VERTICAL AIR STREAM (VAS) WITH V-INSERT DG CPL. WITH BOTTOM PLATE



Vertical Air Stream



Installation kit



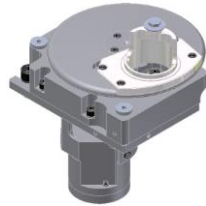
Conversion kit

Description	Part No.
VAS 5” DG - V-insert (incl. Butterfly valve)	2214110041
VAS 5” DG - V-insert – direct flow (incl. Butterfly valve)	2214110047
VAS 5” DG - V-insert – direct flow (without Butterfly valve)	2214110053
Installation kit 70 mm	2214122600
Conversion kit 5” DG to 5” SG	2214110025
Conversion kit 5” DG to 4 ¼” SG	2214110015

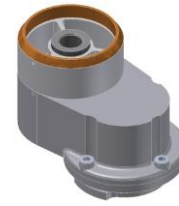
Height Adjustment and Spacer on request

BLOW MOULD COOLING – 5 1/2” CD DG

AXIAL MOULD COOLING (AC) EQUIPPED WITH BALL BEARINGS



Air supply
(ball bearing)



Air supply channel

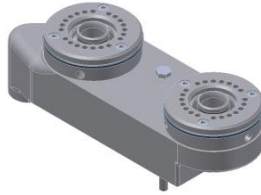
Description	Part No.
Air supply RH (cpl. with intermitt. valve)	2102416400
Air supply LH (cpl. with intermitt. valve)	2102416500
Air supply RH (cpl. with intermitt. Valve, optimized mounting plate)	2102416800
Air supply LH (cpl. with intermitt. Valve, optimized mounting plate)	2102416900
Air supply channel	2101416600
Air supply channel 1”	2101416900
Air supply channel 1 1/4”	2101416700
Cooling piece	2103412500
Cooling piece	2103412600
Adapter 5” – 31,9mm	2103412701
Adapter 5” – 14,3mm	2103412702
Adapter 5” – 28,9mm	2103412703
Cooling Piece Holder RH	2103413003
Cooling Piece Holder LH	2103413004
Blow Mould Holder with Cooling Piece Holder (OLD)	2103413000

BLOW MOULD COOLING – 5 1/2” CD DG

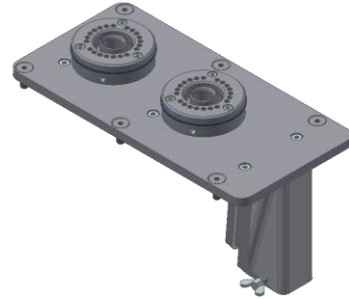
AXIAL MOULD COOLING (AC) BLOW MOULD BOTTOM MECHANISM WITH BOTTOM PLATE ADAPTER



Blow mould bottom mechanism



Blow mould bottom adapter



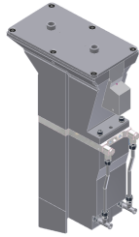
Conversion kit for VAS

Description	Part No.
Blow mould bottom mechanism	2101400800
Blow mould bottom adapter 5 1/2” DG	2103401400
Conversion kit Bottom plate for VAS	2214112300

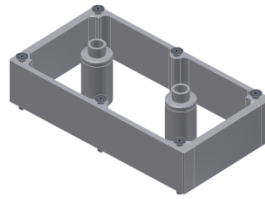
*2101400200 for non-Speedline IS-Machine

BLOW MOULD COOLING – 5 ½” CD DG

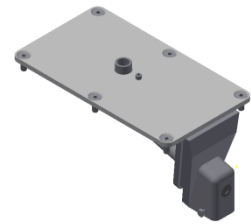
VERTICAL AIR STREAM (VAS) WITH V-INSERT DG CPL. WITH BOTTOM PLATE



Vertical Air Stream



Installation kit

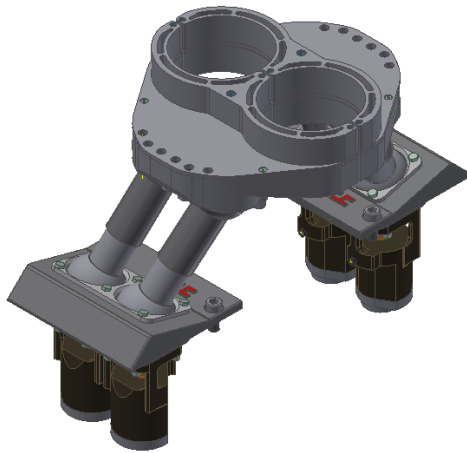


Conversion kit

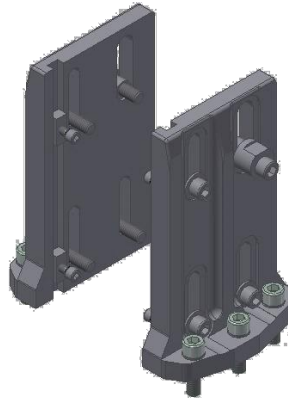
Description	Part No.
VAS 5 ½” DG - V-insert (incl. Butterfly-valve)	2214110042
VAS 5 ½” DG - V-insert – direct flow (incl. Butterfly valve)	2214110048
VAS 5 ½” DG - V-insert – direct flow (without Butterfly valve)	2214110054
Installation kit 70 mm DG	2214122700
Conversion kit 5 ½” DG to SG	2214110026

Height Adjustment and Spacer on request

BLOW MOULD COOLING – 5 1/2” DG
360° AXIAL MOULD COOLING



RH & LH with 35mm 6” Mould Adapter



Mounting Kit RH / LH

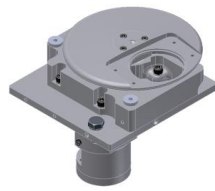


Adapter H=35mm

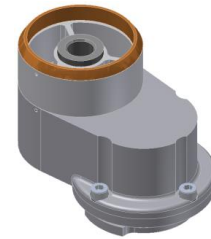
Description	Part No.
360° Axial Cooling RH / LH	2241402000
Mounting Kit RH / LH	2241402200
360° Axial Cooling Piece 5 1/2”	2241402100
Adapter H=35mm 6” Mould	2241402108
Adapter H=35mm 5 3/8” Mould	224140
Adapter H=20mm 5 3/8” Mould	224140
Adapter H=20mm 5” Mould	224140

BLOW MOULD COOLING – 6 ¼” CD DG

AXIAL MOULD COOLING (AC) EQUIPPED WITH BALL BEARINGS



Air supply



Air supply channel

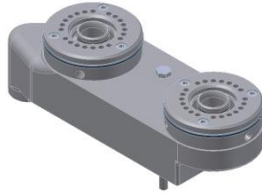
Description	Part No.
Air supply RH (cpl. with intermitt. valve)	2102416400
Air supply LH (cpl. with intermitt. valve)	2102416500
Air supply RH (cpl. with intermitt. Valve, optimized mounting plate)	2102416800
Air supply LH (cpl. with intermitt. Valve, optimized mounting plate)	2102416900
Air supply channel	2101416600
Air supply channel 1”	2101416900
Air supply channel 1 ¼”	2101416700
Cooling Piece for 6 ¼” Moulds	2102412500
Adapter for 5” Moulds	2102414000
Mounting Parts	2102418200
Blow mould holder with cooling piece holder	2102412900

BLOW MOULD COOLING – 6 ¼” CD DG

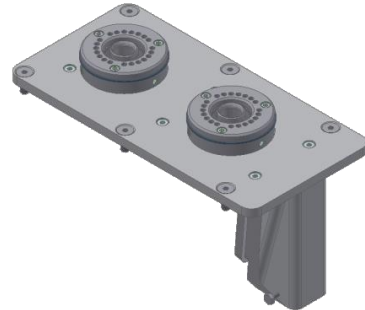
AXIAL MOULD COOLING (AC) BLOW MOULD BOTTOM MECHANISM WITH BOTTOM PLATE ADAPTER



Blow mould bottom mechanism



Blow mould bottom adapter



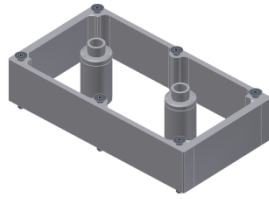
Conversion kit for VAS

Description	Part No.
Blow mould bottom mechanism	2101400800*
Blow mould bottom adapter 6 ¼” DG	2102402000
Conversion kit Bottom plate for VAS	2214112000

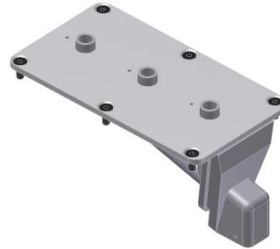
*2101400200 for non-Speedline IS-Machine

BLOW MOULD COOLING – 6 ¼” CD DG**VERTICAL AIR STREAM (VAS) WITH V-INSERT DG CPL. WITH BOTTOM PLATE**

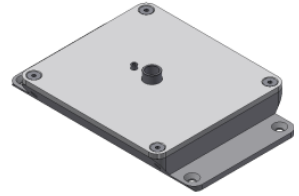
Vertical Air Stream



Installation kit



Conversion kit

SG Conversion kit large
moulds

Description	Part No.
VAS 6 ¼” DG - V-insert (incl. Butterfly valve)	2214110043
VAS 6 ¼” DG - V-insert – direct flow (incl. Butterfly valve)	2214110049
VAS 6 ¼” DG - V-insert – direct flow (without Butterfly valve)	2214110055
Installation kit 70 mm DG	2214122700
Installation kit 70 mm SG	2214122900
Conversion kit 6 ¼” DG to 4 ¼” TG	2214110010
Conversion kit 6 ¼” DG to 6 ¼” SG	2214110027
Conversion kit 6 ¼” SG for 8 ½” (large moulds)	2214124000

Height Adjustment and Spacer on request

BLOW MOULD COOLING – 6 ¼” DG

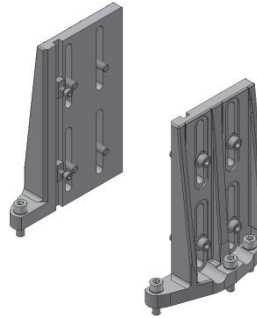
360° AXIAL MOULD COOLING



RH



LH



Mounting Kit RH / LH



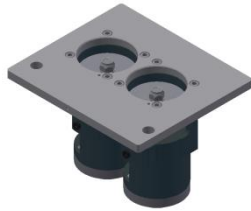
Adapter H=35mm

Description	Part No.
360° Axial Cooling RH with 5” Mould-adapter	2241401000
360° Axial Cooling LH with 5” Mould-adapter	2241401100
Mounting Kit RH / LH	2241400300
Adapter H=35mm	2241401300
360° Axial Cooling Piece 6 ¼”	2241400100

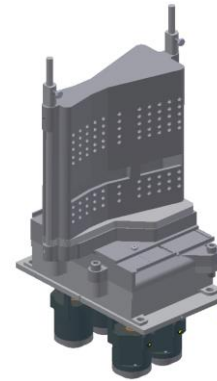
BLOW MOULD COOLING – 6 1/4” CD DG

STACK COOLING RADIAL

Can be used in connection with VAS



Intermittend Valve



Stack Cooling incl. interm. valves

Description	Part No.
Blow Mould Cooling Intermittend Valve RH	213F212820
Blow Mould Cooling Intermittend Valve LH	213F212810
Blow Mould Cooling Center incl. interm. Valves **for 4 1/4” TG use aswell	213F212800
Blow Mould Cooling RH incl. interm. Valves **for 4 1/4” TG use aswell	213F212900
Blow Mould Cooling LH incl. interm. Valves **for 4 1/4” TG use aswell	213F213000

*Air supply can be used with stack cooling SG, DG & TG. Stack pieces can be used on blank mould side aswell.

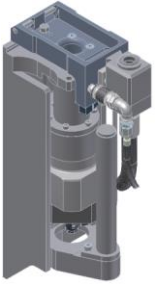
Notice: Stack Cooling Pieces can be used on TG Machine (Other TG Pieces see below)



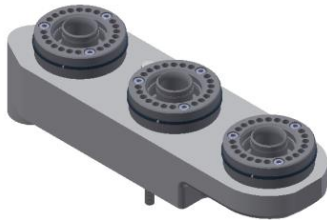
Description	Part No.
Stack Radial cooling conversion parts TG Middle	213F219600
Stack Radial cooling conversion parts TG RH	213F219800
Stack Radial cooling conversion parts TG LH	213F219700

BLOW MOULD COOLING – 4 ¼” CD TG

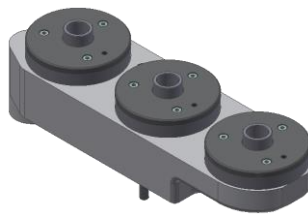
AXIAL MOULD COOLING (AC) BLOW MOULD BOTTOM MECHANISM WITH BOTTOM PLATE ADAPTER



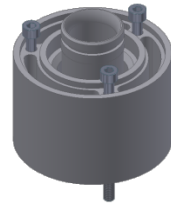
Blow mould bottom mechanism



Blow mould bottom adapter



Conversion kit for VAS



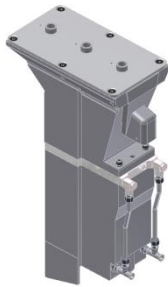
Distance kit

Description	Part No.
Blow mould bottom mechanism	2101400800*
Blow mould bottom adapter 4 ¼” TG	2104401000
Conversion kit for VAS – without bottom cooling (vacuum only)	2104401100
Distance kit 40mm for bottom plate	2104401011

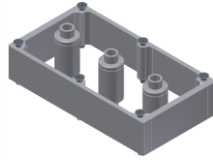
*2101400200 for non-Speedline IS-Machine

BLOW MOULD COOLING – 4 ¼” CD TG

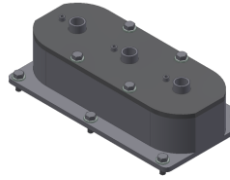
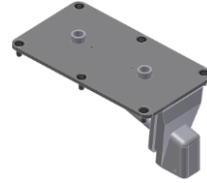
VERTICAL AIR STREAM (VAS) WITH V-INSERT TG CPL. WITH BOTTOM PLATE



Vertical Air Stream



Installation kit

Distance frame
small

Conversion kit

Conversion kit for
VAS

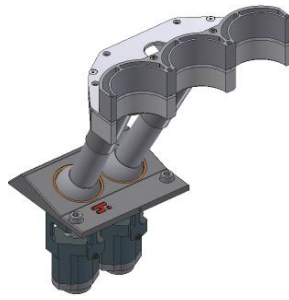
Description	Part No.
VAS 4 ¼” TG - V-insert (incl. Butterfly valve)	2214110044
VAS 4 ¼” TG - V-insert – direct flow (incl. Butterfly valve)	2214110050
VAS 4 ¼” TG - V-insert – direct flow (without Butterfly valve)	2214110056
Conversion kit Bottom plate for VAS – V-Form	2214111800
Conversion kit Bottom plate for VAS – straight-Form	2214112100
Installation kit 70 mm TG	2214122200
Conversion kit 4 ¼” TG to 6 ¼” DG	2214110011
VAS distance frame small 70mm for small jars	2214123200

Height Adjustment and Spacer on request

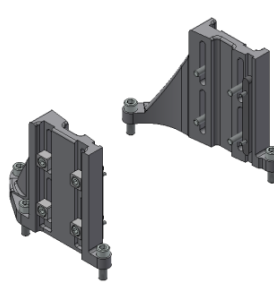
BLOW MOULD COOLING – 4 ¼” CD TG
360° AXIAL MOULD COOLING (AC)



RH



LH



Mounting Kit RH / LH



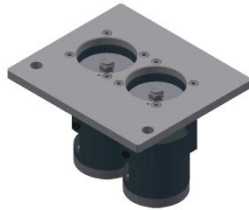
360° Axial Cooling RH / LH with Mounting Kit F=104

Description	Part No.
360° Axial Cooling RH F=90	2241300100
360° Axial Cooling LH F=90	2241310100
Mounting Kit RH / LH	2241300240
360° Axial Cooling RH / LH with Mounting Kit F=104 Cooling Piece	2241300300
Cooling Piece F=90	2241300120
Cooling Piece F=104	2241300170

BLOW MOULD COOLING – 4 1/4" CD TG

STACK COOLING RADIAL

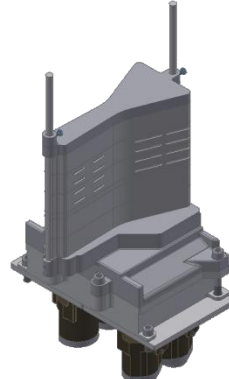
Can be used in connection with VAS



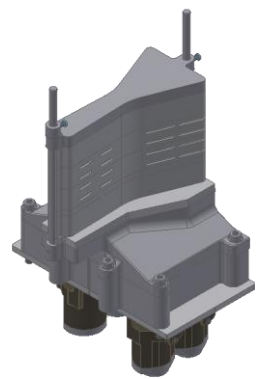
Intermittend Valve



Stack Cooling incl.
intern. Valves**



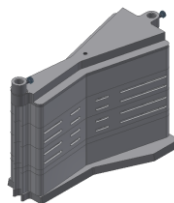
Stack Cooling incl.
intern. Valves
blank & blow-side
stack pcs (Cast Plate)



Stack Cooling incl.
intern. Valves
blank & blow-side
stack pcs

Description	Part No.
Blow Mould Cooling Intermittend Valve RH	213F212820
Blow Mould Cooling Intermittend Valve LH	213F212810
Blow Mould Stack Cooling Center incl. intern. Valves **for 6 1/4" DG use aswell	213F212800
Blow Mould Stack Cooling RH incl. intern. Valves **for 6 1/4" DG use aswell	213F212900
Blow Mould Stack Cooling LH incl. intern. Valves **for 6 1/4" DG use aswell	213F213000
Blow Mould Stack Cooling Center (Cast Plate) without air volume adjustment	2221081900
Blow Mould Stack Cooling RH (Cast Plate) without air volume adjustment	2221082000
Blow Mould Stack Cooling LH (Cast Plate) without air volume adjustment	2221082100
Blow Mould Stack Cooling Center (Cast Plate) without air volume adjustment	2221081600
Blow Mould Stack Cooling RH (Cast Plate) without air volume adjustment	2221081700
Blow Mould Stack Cooling LH (Cast Plate) without air volume adjustment	2221081800
Blow Mould Stack Cooling Center (Cast Plate) for small moulds (without Illustration)	2221081900
Blow Mould Stack Cooling RH (Cast Plate) for small moulds (without Illustration)	2221082000
Blow Mould Stack Cooling LH (Cast Plate) for small moulds (without Illustration)	2221082100

*Air supply can be used with stack cooling SG, DG & TG. Stack pieces can be used on blank mould side aswell.



Description	Part No.
Stack Radial cooling conversion parts DG Middle	213F218600
Stack Radial cooling conversion parts DG RH	213F218800
Stack Radial cooling conversion parts DG LH	213F218700