

SECTION 1.

DELIVERY SYSTEM

SCOOPS SET – SG



H92					
Size	Material	8 Sect. Part No. (Set)	10 Sect. Part No. (Set)	12 Sect. Part No. (Set)	Mounting Kit
2	Precision casting grey iron	-	2206190020	-	only necessary
2 – 3	Precision casting grey iron	2206190016	2206190016	-	on GD Type 2170
3	Precision casting grey iron	2206190015	2206190015	2206190015	

Loadmaster – SpeedLine			
Size	Material	Large Loadmaster 6 ¼” 6 / 8 / 10 / 12 Sect. Part No. (Set)	Small Loadmaster 5” 6 / 8 / 10 / 12 Sect. Part No. (Set)
3	Precision casting grey iron	2206190015	-

SCOOPS SET – DG



H92			
Size	Material	Part No. (Set)	Centering Sleeve required?
0	Sheet metal stainless steel	2206190001	Yes
0 – 1 ½	Sheet metal stainless steel	2206190002	Yes
	Precision casting gray iron	2206190005	Yes
	Precision casting stainless steel	2206190006	Yes
	0 – 2	Sheet metal stainless steel	2206190012
2	Sheet metal stainless steel	2206190003	No
	Precision casting gray iron	2206190007	No
	Precision casting stainless steel	2206190008	No
2 – 3	Sheet metal stainless steel	2206190021	No
	Precision casting gray iron	2206190009	No
	Precision casting stainless steel	2206190010	No
3	Precision casting gray iron	2206190014	No
	Precision casting stainless steel	2206190019	No

Loadmaster – SpeedLine			
Size	Material	Large Loadmaster 6 ¼" 6 / 8 / 10 / 12 Sect. Part No. (Set)	Small Loadmaster 5" 6 / 8 / 10 / 12 Sect. Part No. (Set)
0	Sheet metal stainless steel	-	2206190036
0 – 1 ½	Sheet metal stainless steel	2206190002	-
	Precision casting gray iron	2206190005	-
0-2	Sheet metal stainless steel	2206190012	2206190012
2	Precision casting gray iron	2206190007	2206190003
2-3	Precision casting gray iron	2206190009	-
	Sheet metal stainless steel	2206190021	2206190021
3	Precision casting gray iron	2206190014	-

SCOOPS SET – TG

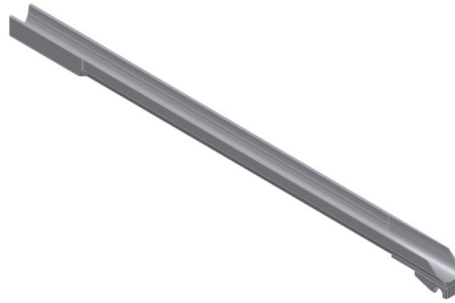


H92			
Size	Material	8 & 10 Sect. Part No. (Set)	12 Sect. Part No. (Set)
0 – 1 ½	Sheet metal (hose)	2206190026 **	2206190028
2	Sheet metal (hose)	2206190027 **	2206190029
2 – 3	Sheet metal (hose)	-	2206190030

Loadmaster – SpeedLine			
Size	Material	Large Loadmaster 6 ¼” 6 / 8 / 10 / 12 Sect. Part No. (Set)	Small Loadmaster 5” 6 / 8 / 10 / 12 Sect. Part No. (Set)
0	Sheet metal (hose)	-	2206190037
0 – 1 ½	Sheet metal (hose)	2206190028	-
0-2	Sheet metal (hose)	-	2206190038
2	Sheet metal (hose)	2206190029	2206190029
2-3	Sheet metal (hose)	2206190030	2206190030

** Use 2206190026 & 2206190027 only for 8 & 10 section machines until 05-2011. After 05-2011 use scoop set 2206190028 & 2206190029 also for 8 & 10 section machines.

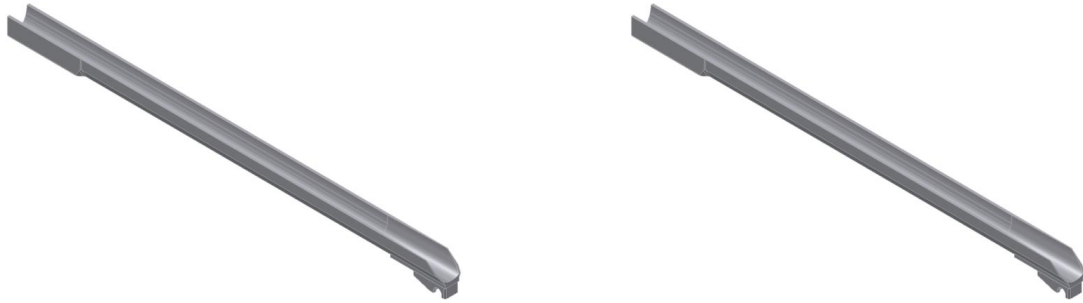
TROUGHS SET – SG



H92				
Size	6 Sect. Part No. (Set)	8 Sect. Part No. (Set)	10 Sect. Part No. (Set)	12 Sect. Part No. (Set)
2	-	-	2206200057	-
2 – 3	-	2206200048	2206200087	-
3	-	2206200047	2206200046	2206200037

Large Loadmaster 6 ¼" Machine - SpeedLine				
Size	6 Sect. Part No. (Set)	8 Sect. Part No. (Set)	10 Sect. Part No. (Set)	12 Sect. Part No. (Set)
3	-	-	-	2206200037

TROUGHES SET – DG

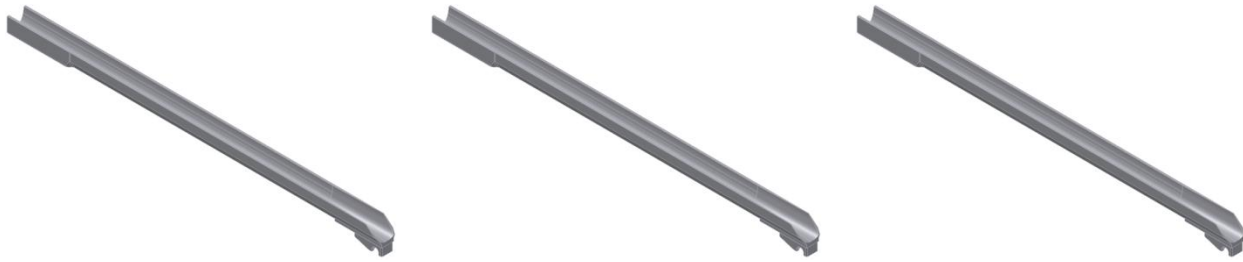


H92				
Size	6 Sect. Part No. (Set)	8 Sect. Part No. (Set)	10 Sect. Part No. (Set)	12 Sect. Part No. (Set)
0	2206200068	2206200004	2206200001	-
0 – 1 ½	2206200067	2206200063	2206200062	2206200018
2	2206200071	2206200012	2206200017	2206200019
2 – 3	2206200070	2206200054	2206200055	2206200056
3	-	2206200009	2206200010	2206200011

Large Loadmaster 6 ¼" Machine – SpeedLine				
Size	6 Sect. Part No. (Set)	8 Sect. Part No. (Set)	10 Sect. Part No. (Set)	12 Sect. Part No. (Set)
0 – 1 ½	2206200067	2206200063	2206200062	2206200061
2	2206200071	2206200012	2206200017	2206200019
2 – 3	2206200070	2206200054	2206200055	2206200056
3	-	2206200009	2206200010	2206200011

Small Loadmaster 5" Machine – SpeedLine				
Size	6 Sect. Part No. (Set)	8 Sect. Part No. (Set)	10 Sect. Part No. (Set)	12 Sect. Part No. (Set)
0	2206200079	2206200078	2206200077	2206200076
0 – 1 ½	2206200067	2206200063	2206200062	2206200061
2	2206200071	2206200012	2206200017	2206200019
2 – 3	2206200070	2206200054	2206200055	2206200056

TROUGHS SET – TG



H92				
Size	6 Sect. Part No. (Set)	8 Sect. Part No. (Set)	10 Sect. Part No. (Set)	12 Sect. Part No. (Set)
0	-	2206200029	2206200021	-
0 – 1 ½	-	2206200066	2206200065	2206200064
2	-	2206200031	2206200024	2206200059
2 – 3	-	-	2206200025	2206200060
3	-	-	-	2206200069

Large Loadmaster 6 ¼" Machine – SpeedLine				
Size	6 Sect. Part No. (Set)	8 Sect. Part No. (Set)	10 Sect. Part No. (Set)	12 Sect. Part No. (Set)
0	-	-	-	-
0 – 1 ½	2206200073	2206200066	2206200065	2206200064
2	2206200074	2206200020	2206200024	2206200059
2 – 3	2206200075	2206200072	2206200025	2206200060
3	-	-	-	2206200069

Small Loadmaster 5" Machine – SpeedLine				
Size	6 Sect. Part No. (Set)	8 Sect. Part No. (Set)	10 Sect. Part No. (Set)	12 Sect. Part No. (Set)
0	2206200083	2206200082	2206200081	2206200080
0 – 1 ½	2206200073	2206200066	2206200065	2206200064
2	2206200074	2206200020	2206200024	2206200059
2 – 3	2206200075	2206200072	2206200025	2206200060

DEFLECTOR SET – SG



H92 – 6 ¼" Machine			
Size	8 Sect. Part No. (Set)	10 Sect. Part No. (Set)	12 Sect. Part No. (Set)
1 ⅜"	-	2206250032	-
1 ½"	2206250075	2206250076	2206260022
1 ⅝"	2206250071	2206250065	2206260019
1 ¾"	2206250072	2206250066	2206260016
1 ⅞"	2206250073	2206250067	2206260013
2"	2206250074	2206250068	2206260010
Holder Set 6 ¼"	2206142100	2206142000	2206142200

H92 – 5" Machine			
Size	8 Sect. Part No. (Set)	10 Sect. Part No. (Set)	12 Sect. Part No. (Set)
1 ⅜"	-	-	2206270047
1 ½"	-	-	2206270050
1 ¾"	-	-	2206270049
Holder Set 5"	2206141100	2206141000	2206151000 (45 ⅝")

Large Loadmaster 6 ¼" Machine – SpeedLine			
Size	8 Sect. 6 ¼" Speed-Line Part No. (Set)	10 Sect. 6 ¼" Speed-Line Part No. (Set)	12 Sect. 6 ¼" Speed-Line Part No. (Set)
1 ½"	-	-	2206270052
2"	-	-	2206270053

DEFLECTOR SET – DG



H92				
Size	6 Sect. Part No. (Set)	8 Sect. Part No. (Set)	10 Sect. Part No. (Set)	12 Sect. Part No. (Set)
5/8"	-	2206250022	2206250027	-
3/4"	2206250090	2206250023	2206250028	-
7/8"	-	2206250008	2206250001	2206250078
1"	2206250034	2206250009	2206250002	2206250077
1 1/8"	2206260025	2206250010	2206250003	2206250036
1 1/4"	2206260026	2206250011	2206250004	2206250037
1 3/8"	2206260028	2206250012	2206250005	2206250038
1 1/2"	2206260027	2206250013	2206250006	2206250039
1 5/8"	-	2206250014	2206250007	2206250040
1 3/4"	-	2206250024	2206250029	2206250041
1 7/8"	-	2206250025	2206250030	-
2"	-	2206250026	2206250031	-

Large Loadmaster 6 1/4" Machine – SpeedLine				
Size	6 Sect. Part No. (Set)	8 Sect. Part No. (Set)	10 Sect. Part No. (Set)	12 Sect. Part No. (Set)
7/8"	2206270034	2206270023	2206270012	2206270007
1"	2206270035	2206270024	2206270013	2206270003
1 1/8"	2206270036	2206270025	2206270014	2206270002
1 1/4"	2206270037	2206270026	2206270015	2206270001
1 3/8"	2206270038	2206270027	2206270016	2206270006
1 1/2"	2206270039	2206270028	2206270017	2206270005
1 5/8"	2206270040	2206270029	2206270018	2206270008
1 3/4"	2206270041	2206270030	2206270019	2206270004

Small Loadmaster 5" Machine – SpeedLine				
Size	6 Sect. Part No. (Set)	8 Sect. Part No. (Set)	10 Sect. Part No. (Set)	12 Sect. Part No. (Set)
5/8"	2206500071	2206500061	2206500051	2206500041
3/4"	2206500072	2206500062	2206500052	2206500042
7/8"	2206500073	2206500063	2206500053	2206500043
1"	2206500074	2206500064	2206500054	2206500044
1 1/8"	2206500075	2206500065	2206500055	2206500045
1 1/4"	2206500076	2206500066	2206500056	2206500046
1 3/8"	2206500077	2206500067	2206500057	2206500047
1 1/2"	2206500078	2206500068	2206500058	2206500048
1 5/8"	2206500079	2206500069	2206500059	2206500049
1 3/4"	2206500080	2206500070	2206500060	2206500050

DEFLECTOR SET – TG



H92				
Size	6 Sect. Part No. (Set)	8 Sect. Part No. (Set)	10 Sect. Part No. (Set)	12 Sect. Part No. (Set)
5/8"	-	2206250057	2206250044	-
3/4"	-	2206250058	2206250045	-
7/8"	-	2206250059	2206250046	2206250015
1"	-	2206250060	2206250047	2206250100
1 1/8"	-	2206250061	2206250048	2206250052
1 1/4"	-	2206250062	2206250049	2206250053
1 3/8"	-	2206250063	2206250050	-
1 1/2"	-	2206250064	2206250051	-

Large Loadmaster 6 1/4" Machine - SpeedLine				
Size	6 Sect. Part No. (Set)	8 Sect. Part No. (Set)	10 Sect. Part No. (Set)	12 Sect. Part No. (Set)
3/4"	-	-	-	2206270046
1"	2206270042	2206270031	2206270020	2206270009
1 1/8"	2206270043	2206270032	2206270021	2206270010
1 1/4"	2206270044	2206270033	2206270022	2206270011
1 3/8"	-	-	-	2206270048

Small Loadmaster 5" Machine - SpeedLine				
Size	6 Sect. Part No. (Set)	8 Sect. Part No. (Set)	10 Sect. Part No. (Set)	12 Sect. Part No. (Set)
5/8"	2206500031	2206500021	2206500011	2206500001
3/4"	2206500032	2206500022	2206500012	2206500002
7/8"	2206500033	2206500023	2206500013	2206500003
1"	2206500034	2206500024	2206500014	2206500004
1 1/8"	2206500035	2206500025	2206500015	2206500005
1 1/4"	2206500036	2206500026	2206500016	2206500006
1 3/8"	2206500037	2206500027	2206500017	2206500007
1 1/2"	2206500038	2206500028	2206500018	2206500008
1 5/8"	2206500039	2206500029	2206500019	2206500009
1 3/4"	2206500040	2206500030	2206500020	2206500010