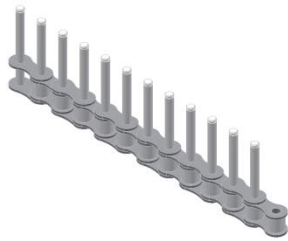


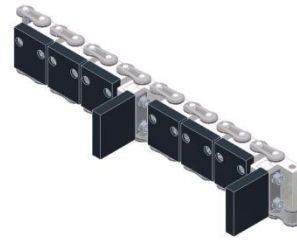
SECTION 14.

CHAIN FOR WARE TRANSFER

CHAIN FOR TYPE 4220



Roller chain

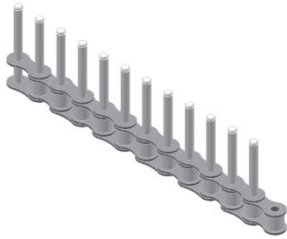


Main chain

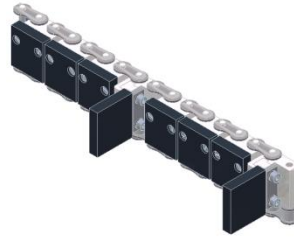
Finger chain $t=3/4''$	No. of elements	Finger distance $n \times t = \text{mm}$	Article limit \varnothing mm	Finger length Dura Temp mm	Part No. for complete chain with QC Finger	Part No. chain w/o Finger	Part No. for Finger
Standard	180	$4 \times 3/4'' = 76.20$	$36 \leq 60$	40	4220110037	4220029900	4220020222
		$5 \times 3/4'' = 95.25$	≤ 76	45	4220110040	4220029800	4220020215
		$6 \times 3/4'' = 114.3$	≤ 92	54	4220110041	4220029700	4220020201
Option	182	$7 \times 3/4'' = 133.35$	≤ 107	60	4220110046	4220029600	4220020238
	176	$8 \times 3/4'' = 152.40$	≤ 122	66	4220110043	4220029500	4220020202

Finger chain $t=5/8''$	No. of elements	Finger distance $n \times t = \text{mm}$	Article limit \varnothing mm	Finger length Dura Temp mm	Part No. for complete chain with QC Finger	Part No. chain w/o Finger	Part No. for Finger
Option	216	$3 \times 5/8'' = 47.625$	≤ 34	30	4220110067	4220034100	4220020311

CHAIN FOR TYPE 4222



Roller chain



Main chain

Finger chain t=3/4"	No. of elements	Finger distance n x t=mm	Article limit \varnothing mm	Finger length Dura Temp mm	Part No. for complete chain with QC Finger	Part No. chain w/o Finger	Part No. for Finger
Standard	150	5 x 3/4" = 95.25	≤ 77	45	4222110019	4222024100	4220020215
		6 x 3/4" = 114.3	≤ 90	54	4222110020	4222024200	4220020201
Option	152	4 x 3/4" = 76.2	≤ 60	40	4222110021	4222024000	4220020222
		8 x 3/4" = 152.4	≤ 120	66	4222110025	4222024400	4220020202
	154	7 x 3/4" = 133.35	≤ 105	60	4222110022	4222024300	4220020238

Finger chain t=5/8"	No. of elements	Finger distance n x t=mm	Article limit \varnothing mm	Finger length Dura Temp mm	Part No. for complete chain with QC Finger	Part No. chain w/o Finger	Part No. for Finger
Option	180	3 x 5/8" = 47.625	≤ 34	30	4222110060	4222034600	4220020311
		5 x 5/8" = 79.375	≤ 61	45	4222110062	4222034500	4220020215