

HEYE UNI SCOOPS



Heye UNI Scoops

Heye has introduced a new generation of scoops, which are characterised by superior accuracy and remarkable cooling efficiency.

One of the most significant advantages of these scoops is their ability to cover a much larger working range than conventional scoops with a „U-profile.“ The size ranges of the UNI scoops are divided into three working ranges: UNI I, UNI II, and UNI III. For example, the UNI scoops of size II cover a working range of gob weights from approximately 100 grams to 600 grams. This means that in a typical production program, the UNI scoops can often remain in the machine during job changes, reducing the frequency of scoop exchange.

The UNI scoops are machined from solid stainless steel material on CNC machines. This results in the highest achievable precision in terms of dimensional accuracy.

Compared to scoops with a U-profile, which allows the gob to swing slightly as it moves through the scoop, the UNI scoops enable the gob to exit the scoop precisely in the centre. The design of the UNI scoops guides the gob accurately on both sides (see Pic. 1). The gob leaves the scoop channel exactly in the middle and continues its path precisely on the guide plates. The advantages of this precise loading are significant. When considering the working width (coverage of different gob sizes) of the UNI scoops in terms of investment, there is generally a cost saving for the user despite the relatively high cost due to CNC manufacturing from solid material. This is primarily due to the reduced need to stock multiple sizes of various U-profile scoops. Reducing the frequency of scoop swaps during job changes provide additional efficiency improvements.

Among other improvements, the UNI scoop solution features an advanced cooling system, which enhances performance and efficiency. This significantly improved cooling system is based on a three-chamber design, rather than the usual two-chamber system, resulting in much more uniform cooling of the scoops on both sides.

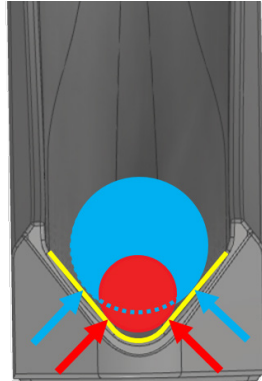
In order to take complete advantage of the features of the UNI scoops, a height-adjustable console (see Pic. 2) for the guide plate of the Load-Master Delivery System is required. All Heye SpeedLine machines manufactured from 2022 onward come with the adjustable console as standard. For SpeedLine machines produced prior to 2022, retrofitting with an adjustable console is possible with a certain amount of conversion work.

Standard U-Profile

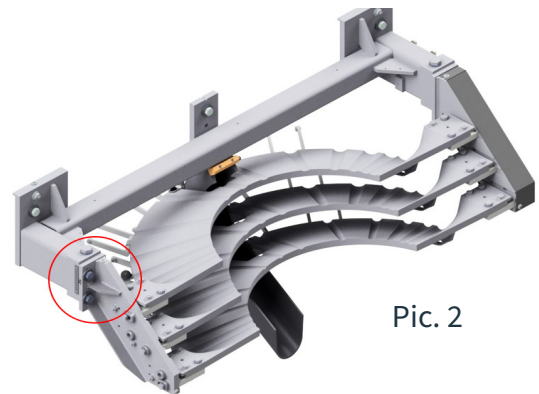


Pic. 1

Improved UNI Profile



Height-adjustable console of the guide plate



Pic. 2

Advantages

- + Precision manufactured profile / cross section:
 - + Precise gob guidance at entrance thanks to exactly defined scoop geometry
 - + Reduced swinging of the gob inside the scoop
 - + The gob is precisely guided from the scoop into the downstream gob loading system (LoadMaster)
- + More efficient 3-chamber cooling system
- + Minimises the inventory of various scoop sizes, simplifying inventory management and lowering costs
- + Reduced necessity of swapping scoops during job changes



Heye International GmbH
Lohplatz 1, 31683 Obernkirchen
Germany

T +49 5724 26 0

www.heye-international.com

